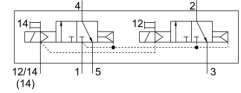
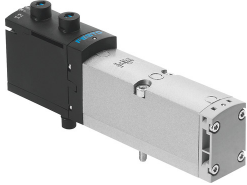


Air solenoid valve VSVA-B-T32C-AZD-A1-1T1L

FESTO

Part number: 539150



Data sheet

| Feature | Value |
|---|---|
| Valve function | 2x3/2, closed, monostable |
| Actuation type | Electrical |
| Width | 26 mm |
| Standard nominal flow rate | 900 l/min |
| Pneumatic working port | Sub-base, size 26 mm as per ISO 15407-1 Size 01 sub-base as per VDMA 24563 G1/4 |
| Operating voltage | 24V DC |
| Operating pressure | 0.3 MPa ... 1 MPa |
| Operating pressure | 3 bar ... 10 bar |
| Structural design | Piston gate valve |
| Certification | c UL us - Recognized (OL) |
| Degree of protection | IP65 NEMA 4 |
| Type code | VSVA |
| Exhaust air function | With flow control option Via throttle plate Via individual sub-base |
| Sealing principle | Soft |
| Mounting position | Any |
| Manual override | Detenting Non-detenting Covered |
| Type of control | Pilot-controlled |
| Pilot air supply port | External Internal |
| Flow direction | Non-reversible |
| Symbol | 00991817 |
| Lap | Overlap |
| Signal status display | LED |
| Pilot pressure MPa | 0.3 MPa ... 1 MPa |
| Pilot pressure | 3 bar ... 10 bar |
| Flow rate of pneumatic valve | 1250 l/min |
| Flow rate of pneumatic valve on individual sub-base | 1100 l/min |
| Optimized flow rate of pneumatic valve, pneumatically concatenated flow | 1150 l/min |
| Optimized flow rate of pneumatic valve pneumatically concatenated flow | 900 l/min |
| Switching time off | 38 ms |

| Feature | Value |
|--|--|
| On switching time | 20 ms |
| Duty cycle | 100% |
| Max. positive test pulse with 0 signal | 1500 µs |
| Max. negative test pulse on 1 signal | 1200 µs |
| Max. current consumption | 60 mA |
| Nominal operating voltage DC | 24 V |
| Coil characteristics | 24 V DC: 1.3 W |
| Surge resistance | 2.5 kV |
| Contamination level | 3 |
| Permissible voltage fluctuations | +/- 10 % |
| Operating medium | Compressed air as per ISO 8573-1:2010 [7:4:4] |
| Information on operating and pilot media | Operation with oil lubrication possible (required for further use) |
| Vibration resistance | Transport application test with severity level 2 as per FN 942017-4 and EN 60068-2-6 |
| Shock resistance | Shock test with severity level 2 as per FN 942017-5 and EN 60068-2-27 |
| Corrosion resistance class (CRC) | 0 - No corrosion stress |
| Relative air humidity | 0 - 90 % |
| Pilot medium | Compressed air as per ISO 8573-1:2010 [7:4:4] |
| Ambient temperature | -5 °C ... 50 °C |
| Product weight | 335 g |
| Electrical connection | Plug-in as per ISO 15407-2 |
| Type of mounting | On sub-base |
| Pilot air port 12/14 | Sub-base, size 26 mm as per ISO 15407-2 |
| Pilot exhaust air port 82/84 | Optionally: Not ducted as per standard Ducted |
| Pneumatic connection 1 | Sub-base, size 26 mm as per ISO 15407-2 |
| Pneumatic connection 2 | Sub-base, size 26 mm as per ISO 15407-2 |
| Pneumatic connection 3 | Sub-base, size 26 mm as per ISO 15407-2 |
| Pneumatic connection 4 | Sub-base, size 26 mm as per ISO 15407-2 |
| Pneumatic connection 5 | Sub-base, size 26 mm as per ISO 15407-2 |
| Note on materials | RoHS-compliant |
| Seals material | FPM HNBR NBR |
| Housing material | Die-cast aluminum PA |
| Material of screws | Steel, galvanized |